

A young girl with dark hair in pigtails and bangs, wearing a light-colored cable-knit sweater, is sitting at a wooden table. She is looking towards the camera with a slight smile. On the table in front of her are various art supplies, including a box of colorful markers and some papers. One of the papers has a drawing of a green car with a person inside. Another paper has the text '#ChargeAhead' written on it. The background is a wooden wall with horizontal slats.

EQUITY & JUSTICE IN CLEAN TRANSPORTATION

Joel Espino, Wend Collective

UNDERSTANDING THE PROBLEM

GRAM'S OFFICIAL INDEXED STREET MAP OF PITTSBURGH

McKeesport, Duquesne, Ambridge, Wilkinsburg
and 68 other Municipalities in the Pittsburgh area.

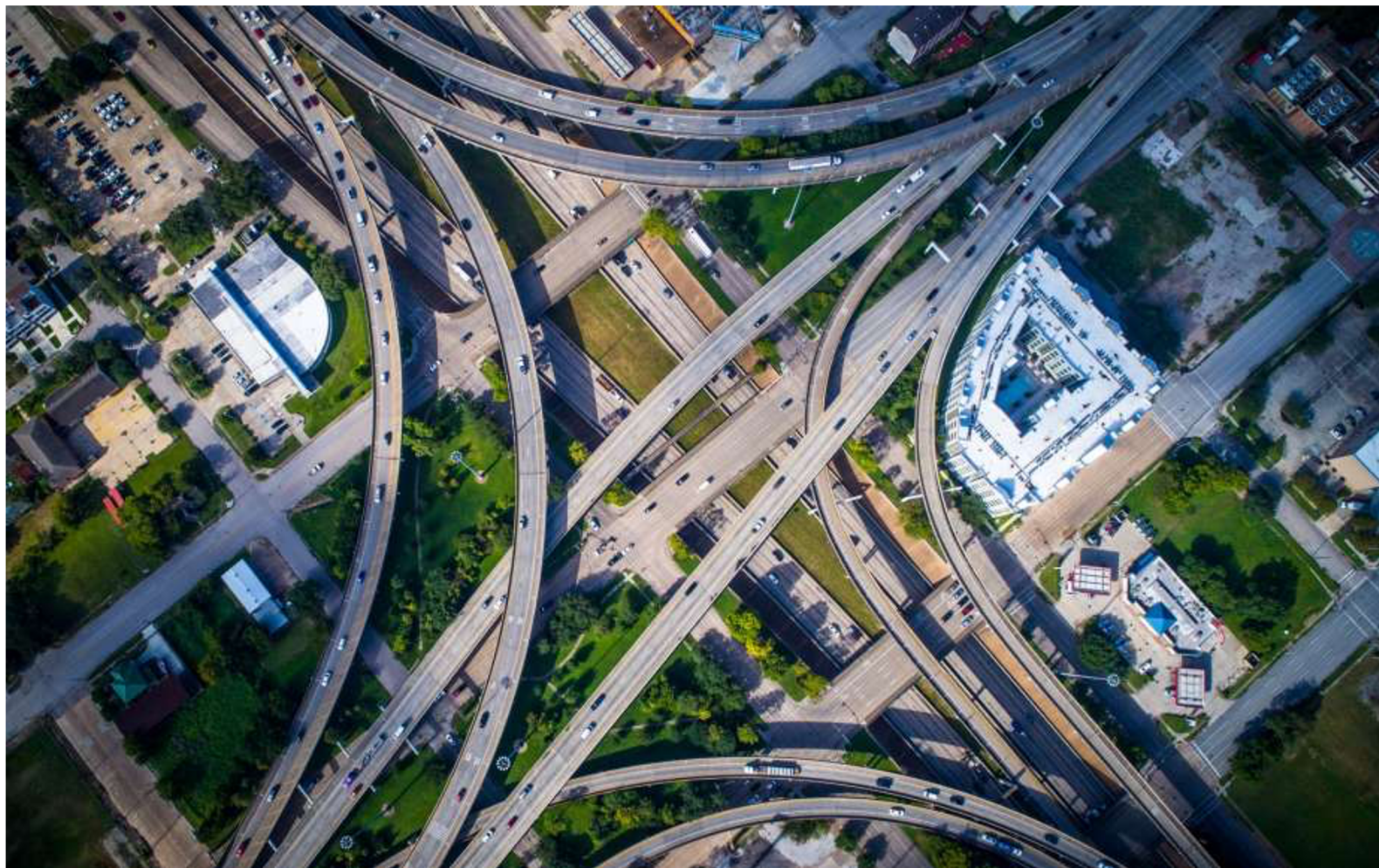
Created, Revised, Printed and Published by
THE GEORGE F. GRAM COMPANY
Maps of Bureau, Cincinnati, Chicago, Cleveland, Detroit, Indianapolis, St. Louis and other Cities
Home Office and Plant Indianapolis, Indiana



AREA DESCRIPTION

(For Instructions see Reverse Side)

1. NAME OF CITY Philadelphia, Pa. SECURITY GRADE D AREA NO. 12
2. DESCRIPTION OF TERRAIN. Level
3. FAVORABLE INFLUENCES. Close to business - good transportation - subway, busses, trolley.
4. DETRIMENTAL INFLUENCES. Negro concentration - heavy absolence.
5. INHABITANTS:
- a. Type Laborers - Mechanics. ; b. Estimated annual family income \$900 - 1,800
- c. Foreign-born nominal ; % ; d. Negro yes ; 80 % ;
(Nationality) (Yes or No)
- e. Infiltration of negro ; f. Relief families very heavy ;
- g. Population is increasing ; decreasing ; static.



Air pollution Pennsylvania

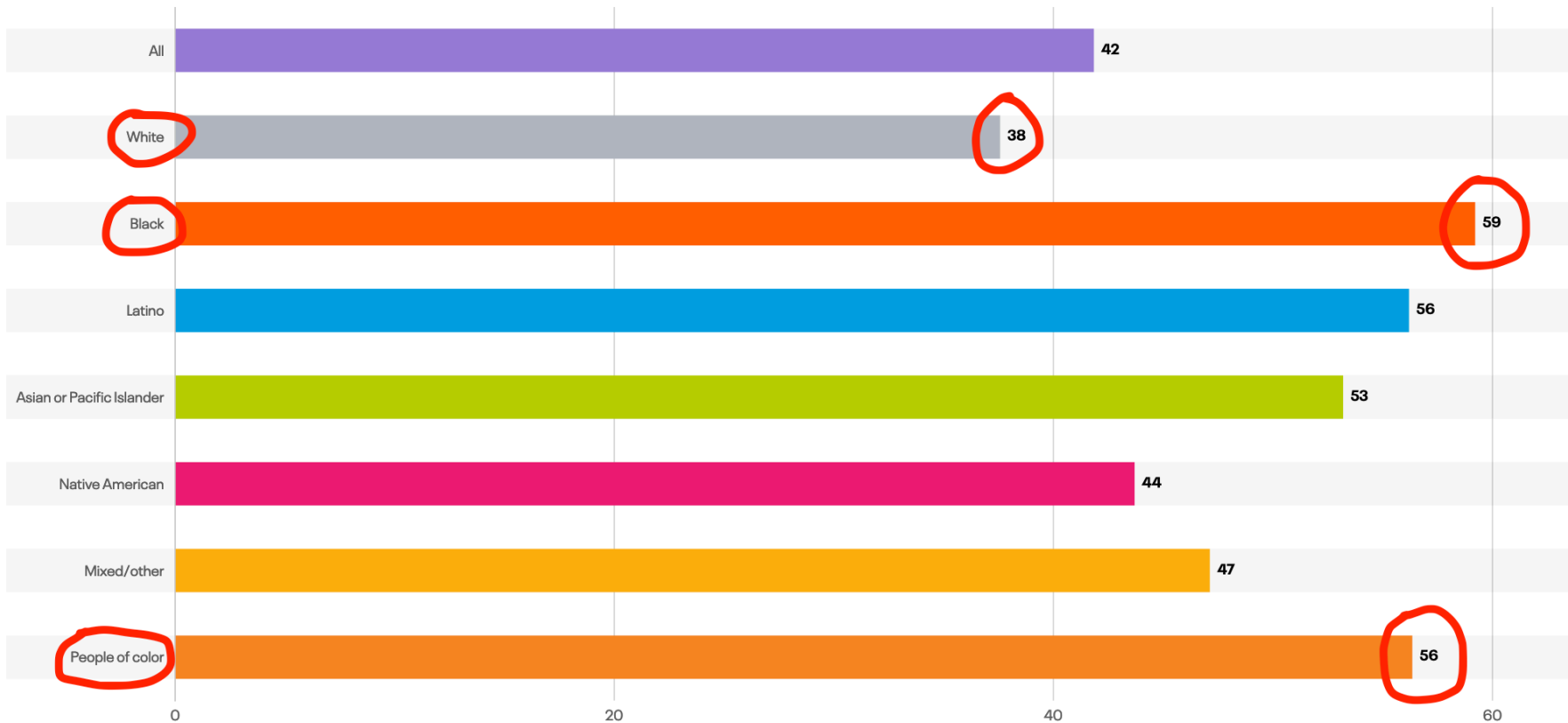
Air pollution exposure index, by race/ethnicity: Pennsylvania; **Risk Type:** Cancer and non-cancer; **Year:** 2017

BREAKDOWN

FILTERS:

RISK TYPE

YEAR



FAMILY WEALTH BY RACE



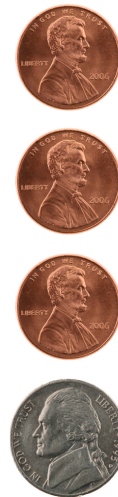
WHITE



ASIAN



LATINO

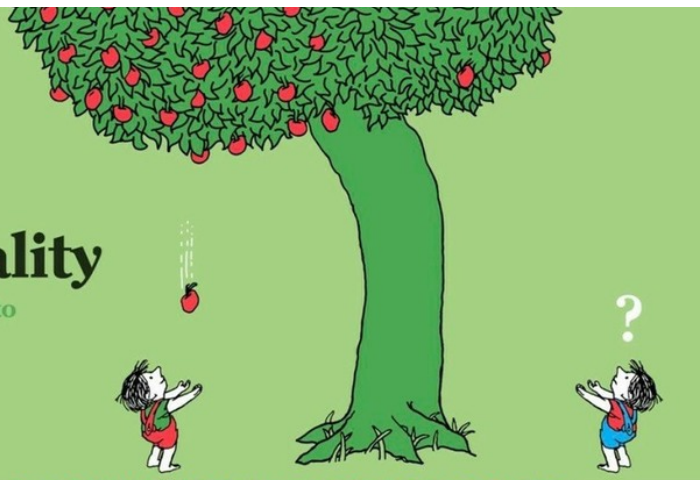


BLACK

EQUITY & JUSTICE IN CLEAN TRANSPORTATION

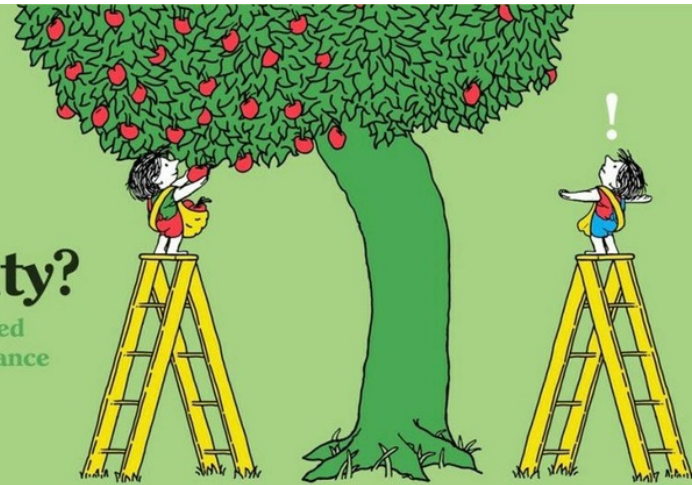
Inequality

Unequal access to opportunities



Equality?

Evenly distributed tools and assistance



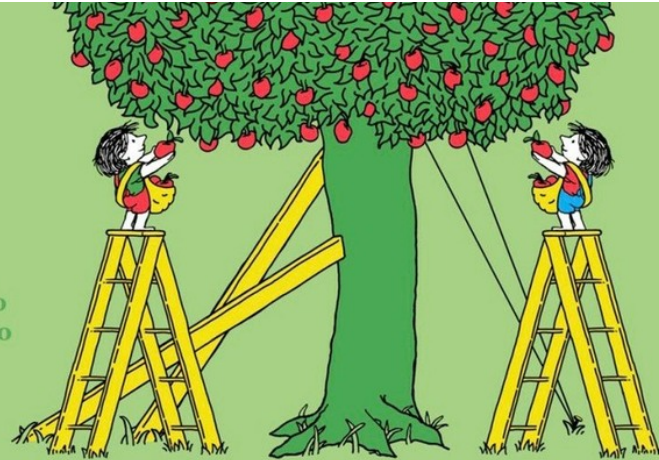
Equity

Custom tools that identify and address inequality



Justice

Fixing the system to offer equal access to both tools and opportunities





EQUITY IN CLEAN TRANSPORTATION

- Address past harm - equity & justice, not equality
- Those closest to the pain, are closest to the solution - effort must be community-driven and practice participatory governance
- Interconnected problems, interconnected solutions – create multiple benefits
- Representative, equitable government
- Adapt, learn, iterate

AFFORDABLE HOUSING MOBILITY HUB



ELECTRIC RURAL RIDESHARE

Green Raiteros

